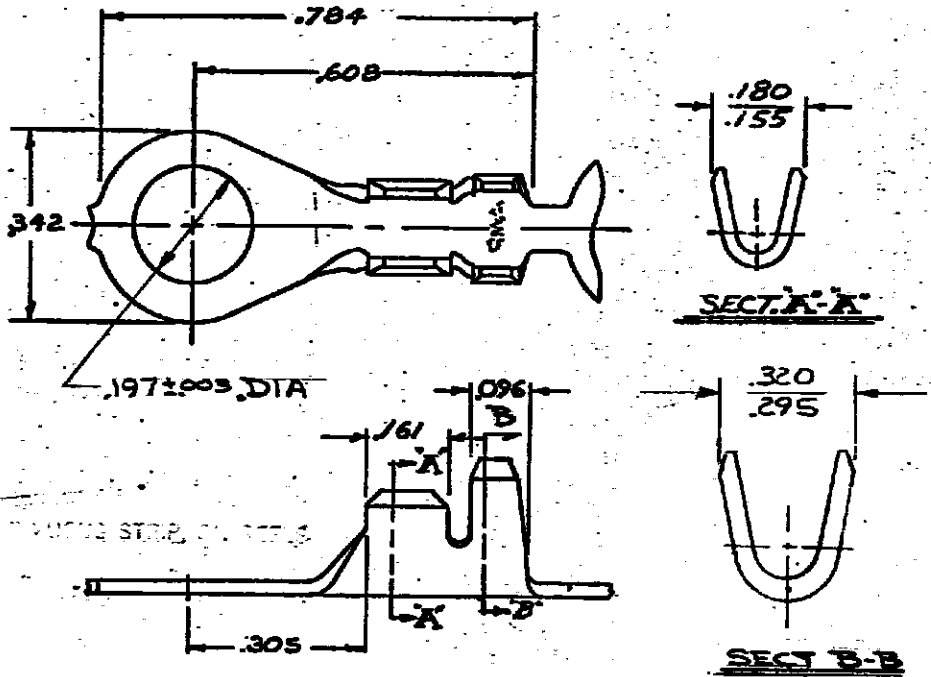


DRAWING MADE IN THIRD ANGLE PROJECTION

LOC **AF** DIST **20**


© COPYRIGHT 1975 BY AMP INCORPORATED, HARRISBURG, PA. ALL INTERNATIONAL RIGHTS RESERVED. AMP INCORPORATED PRODUCTS COVERED BY FOREIGN PATENTS PENDING.

REVISIONS			
LTR	DESCRIPTION	DATE	APPROVED
A	RELEASED FOR PROD PAR.	4/20/76	GY/DA
B	ADDED DASH #2 TTI 76-129	8/18/76	MM/S.H.
C	OBSOLETE 640253-2 A-3874	6/29/78	SS/
D	RE-ACTIVATE PART NO -2	2-14-80	RS/
E	REVISED AF0538	10/9/84	SL/
F	OBS -1 + REVISED AF1705	5/8/86	SS/
F1	REVISED PER ECR-13-000107	9/1/13	Y.H.M



NICKEL PLATED STEEL	640253-4
REFILED WITH U'S UP	640253-2
<del>REFILED WITH U'S UP</del>	<del>640253-1</del>

WIRE SIZE 16-12 INSUL SIZE (2).125 DIA PART NO

UNLESS OTHERWISE SPECIFIED DIMENSIONS ARE IN INCHES. TOLERANCES ON DECIMALS ±.015 ANGLES ±	CONTRACT NO	 <b>AMP INCORPORATED</b> Harrisburg, Pa.
	DR	
MATERIAL <b>.018 BRASS</b>	CHK	NAME <b>RING</b>
	ASBL	
FINISH <b>TIN</b>	APPD	SIZE <b>A</b>
	DSGN APPD	CODE IDENT NO <b>00779</b>
OTHER APPD	DRAWING NO <b>640253</b>	SCALE
		SHEET

AMP 1469-82 (7-73)

**CUSTOMER DRAWING**